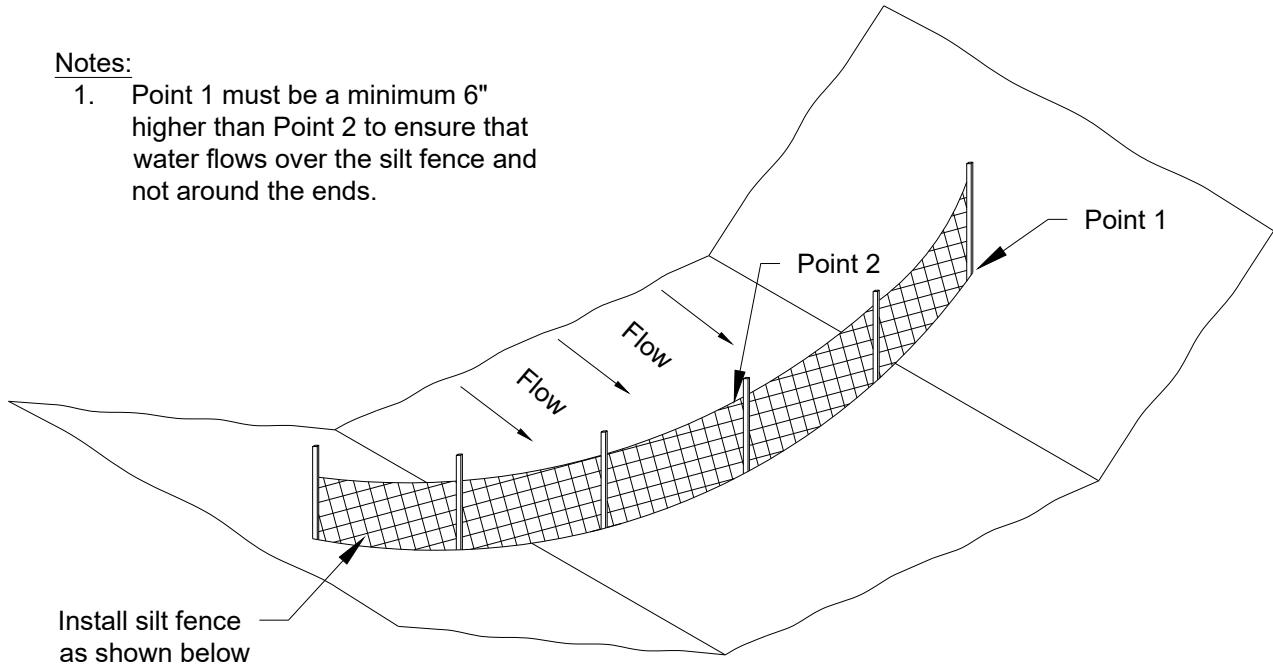


**Notes:**

1. Point 1 must be a minimum 6" higher than Point 2 to ensure that water flows over the silt fence and not around the ends.



Steel fence post (T-Post)  
minimum 5' long  
4' maximum spacing

Post notches to face  
away from fabric

Attach fabric to posts with minimum 3 zip ties  
(50 Lb tensile) per post in top 8" of fabric

Monofilament geotextile fabric

Machine slice 8" - 12" depth  
(plus 6" flap) trench must be  
compacted by light equipment  
prior to placement of steel posts

Direction of surface flow

20" min post  
embedment.  
24" for slopes 3:1 or  
greater.

MA:STANDARD SPECS & DETAIL S/2019/Detail Plates/ERO-9\_DITCH CHECK MACHINE SLICED SILT FENCE.dwg

City Plate No.:  
ERO-9

Last Revision:  
7/2/2019

File:  
ERO\_9.dwg

**STANDARD DETAILS  
DITCH CHECK  
MACHINE SLICED SILT FENCE**

**City of Minot**  
Engineering Department