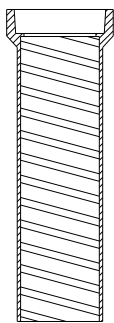




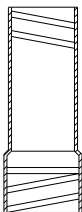
DROP LID
Tyler No. 6860



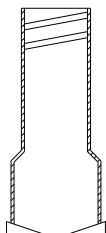
DROP-IN RISER - 2"



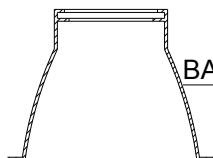
TOP
Tyler No. 6860 26"



EXTENSION
Tyler No. 58 14"
No. 59 18"
No. 60 24"

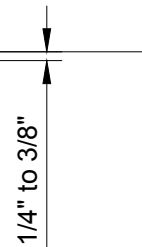


BOTTOM
Tyler No. 6860 65"



BASE

8.5' Minimum cover required
over top of water main.



Tyler No. 6860 or approved equal
Gate valve box, screw type, 3
piece, 5 1/4" shaft, size G box,
8'-6" extended.

Wrap gate valve & box with
polyethylene pipe
encasement material

DRAFT

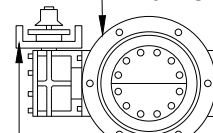
Butterfly valve adaptor

Class 3M
aggregate

8" Concrete block

Butterfly valve
(18" or larger)
conforming to
AWWA C504

End view



Butterfly valve
adaptor

C:\Users\stakeard\Desktop\MINOT DETAIL\SYSTR-8 PEDESTRIAN CURB RAMP PATHWAY-SIDEWALK.dwg

City Plate No.:
WAT-4
Last Revision:
4/8/2019
File:
WAT_4.dwg

**STANDARD DETAILS
BUTTERFLY VALVE AND
BOX INSTALLATION**

