

TRAFFIC SIGNAL STANDARD FOUNDATION SELECTION TABLE		
DESCRIPTION	24" DIAMETER REINFORCING BARS REQUIRED	24" DIAMETER FOOTING DEPTH "D"
TYPE V PED. FLASHER	4-#5 ①	4'

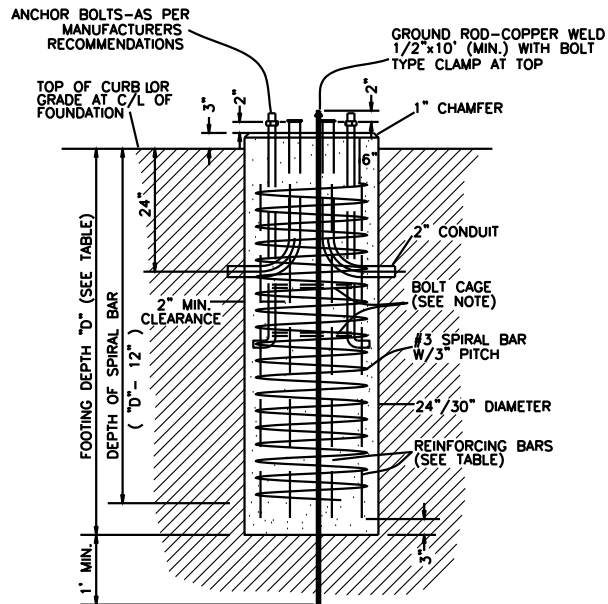
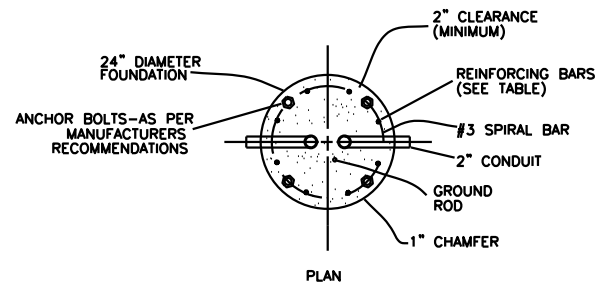
NOTES:

- NO REINFORCEMENT IS REQUIRED IF THE ANCHOR BOLTS EXTEND TO WITHIN 3" TO 6" ABOVE THE BOTTOM OF THE FOUNDATION.
- ALL REINFORCING STEEL TO BE GRADE 40 OR 60.
- SEE PLANS FOR CONDUIT SIZE, NUMBER OF BENDS AND CORRECT POSITIONING FOR EACH FOUNDATION.
- WHEN CONDUIT DOES NOT CONTINUE BEYOND THE FOUNDATION, CONDUIT WITH A 105° BEND AND BUSHINGS ON BOTH ENDS MAY BE SUBSTITUTED FOR THE 90° BENDS SHOWN.
- SEE PLANS FOR CORRECT LOCATION OF FOUNDATIONS. THE GRADE AND EXACT LOCATION SHALL BE ESTABLISHED BY THE ENGINEER IN THE FIELD.
- MAXIMUM BOLT CIRCLE FOR THE 24" FOUNDATION SHALL NOT EXCEED 18".

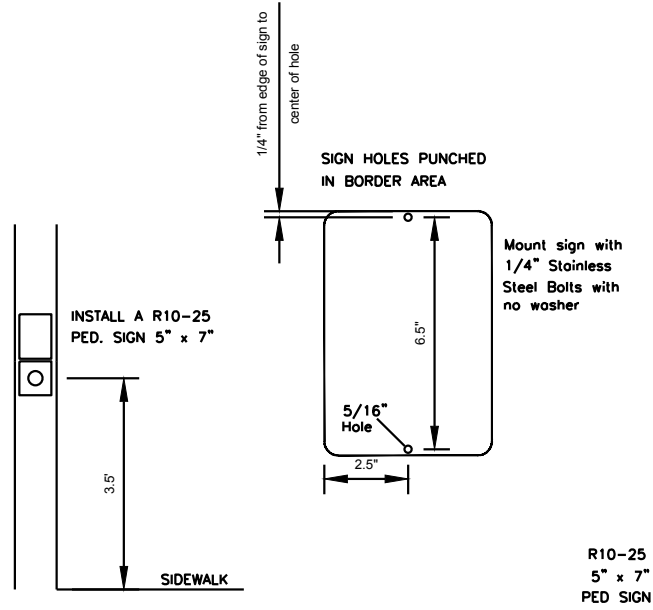
CONCRETE FOUNDATION:

1. CONCRETE USED IN THE WORK SHALL BE CLASS AE PORTLAND CEMENT CONCRETE MIXED AND PROPORTIONED AS SPECIFIED IN SECTION 802.

NOTE:
THE TOP OF THE FOUNDATION SHALL BE CIRCULAR.



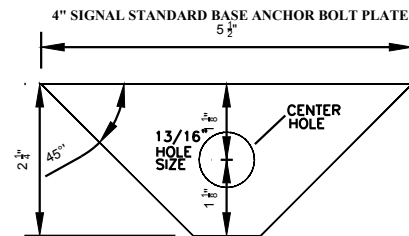
24" DIA. FOUNDATION
TYPE V PEDESTRIAN FLASHER FOUNDATIONS



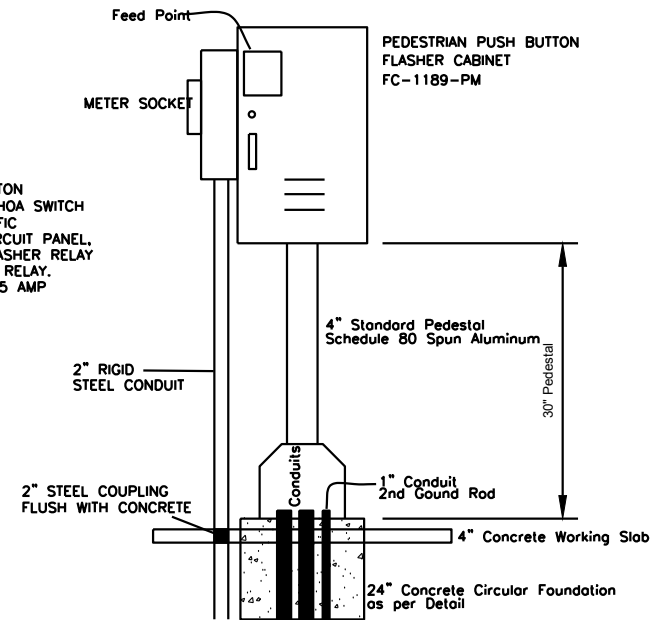
TYPE V PED. FLASHER MOUNTED PUSH BUTTON DETECTOR

DRAFT

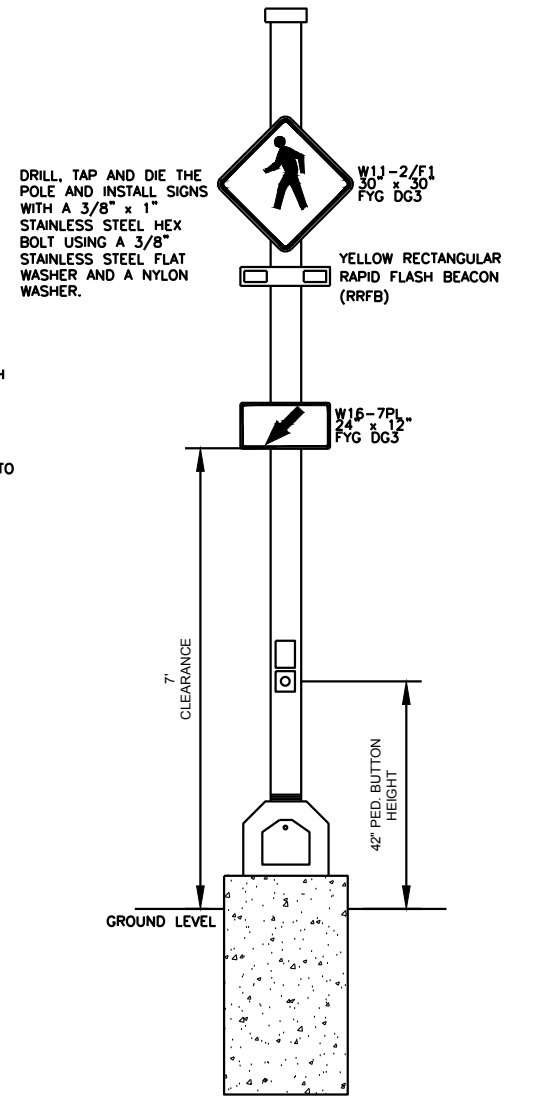
CABINET SHALL BE A PUSH BUTTON ACTIVATED FLASHER CABINET W/HOA SWITCH MANUFACTURED BY BROWN TRAFFIC PRODUCTS, WITH A FLASHING CIRCUIT PANEL, A GENERAL PURPOSE RELAY, FLASHER RELAY AND MULTIFUNCTION TIME DELAY RELAY. CABINET SHALL HAVE ITS OWN 15 AMP CIRCUIT BREAKER.



NOTES:
1. CUT FROM 1/4" WIDE GALVANIZED STEEL
2. THIS PLATE SHALL BE INSTALLED BETWEEN THE BASE AND THE ANCHOR BOLT NUT IN ALL 4" TYPE V SIGNAL STANDARD BASES.



TYPE V PEDESTRIAN FLASHER



ALL CENTER MEDIAN ISLAND TYPE V FLASHERS SHALL HAVE 2 LED YELLOW RRFB'S AND 2 PEDESTRIAN SIGNS ON TYPE V POLE, ONE SET FACING EACH DIRECTION OF TRAFFIC.

INSTALL A NO.12 AWG 2 CONDUCTOR FROM PEDESTRIAN PUSH BUTTON TO THE FLASHER CABINET CONNECTIONS.