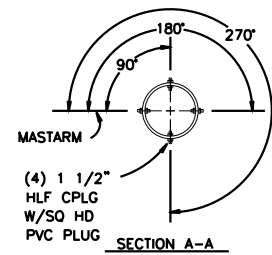
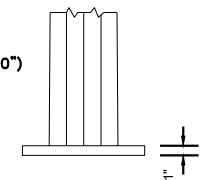


TYPE V, TYPE V, TYPE VIII SIGNAL STANDARDS

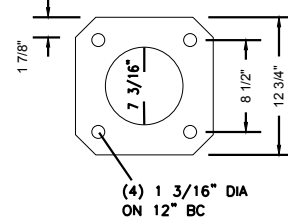


POLES:
ALL TYPE V AND TYPE VI SIGNAL STANDARDS SHALL BE MANUFACTURED BY MILLERBERND MANUFACTURING AND HAVE A T-BASE INSTALLED.

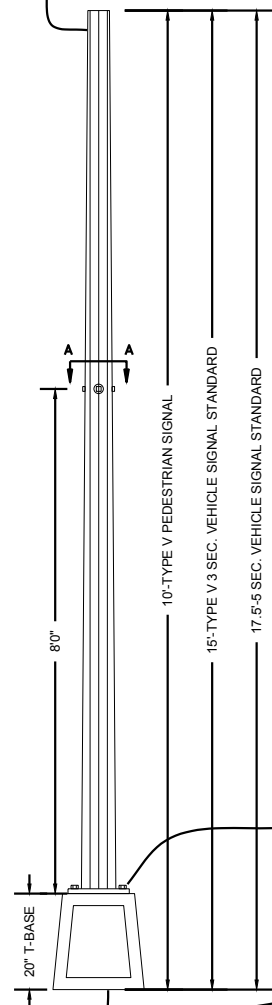
3/16" x 7.17" x 4.5" x (100"/160"/190")



POLE BASE PLATE

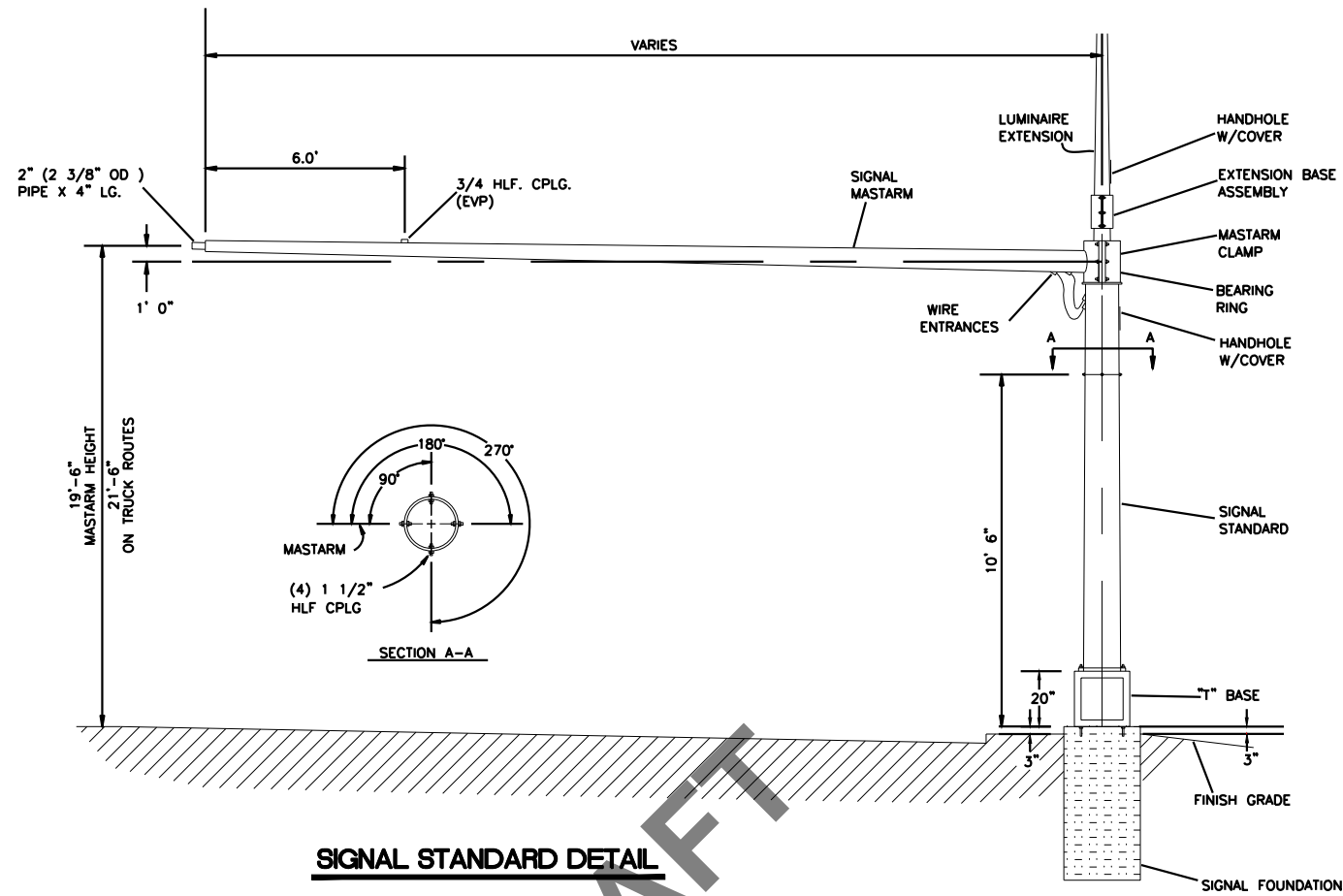


NOTE:
POLE MATERIAL-HIGH STRENGTH LOW ALLOY STEEL 50,000 PSI MIN. YIELD PER ASTM A572 OR A1011(A871 OR A606 IF SELF WEATHERING) BASE PLATE MATERIAL-36,000 PSI MIN. YIELD PER ASTM A36(A588 IF SELF WEATHERING) SHALL BE PAINTED USING THE MILLERBOND 12/ZRU PAINT SYSTEM WITH A TOP CLEAR COAT.

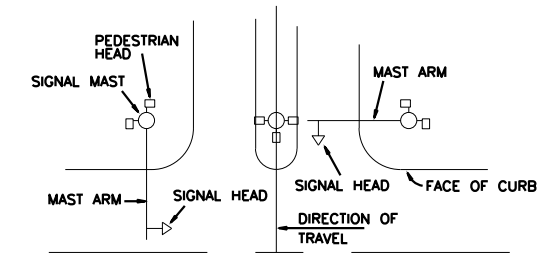


(4) 1-BNC x 3 1/2" LG Hvy HX HD BOLT, Hvy HX NUT & LOCKWASHER (ASTM A325-GV) (INSTALL HD UP)

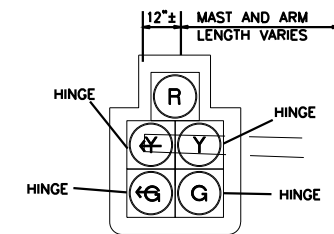
390C66 T-BASE
1" ANCHOR BOLTS ON 15" BC WITH 4" PROJ



SIGNAL STANDARD DETAIL



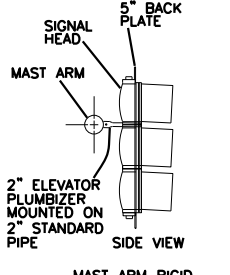
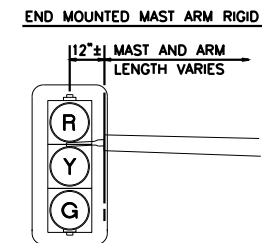
NOTE:
-THIS IS A TYPICAL PLAN LAYOUT
-HEADS SHALL NOT PROTRUDE OVER THE FACE OF THE CURB



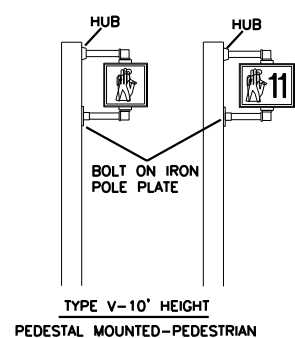
NOTE:
5-SECTION CLUSTER HEAD ASTRO BRACKET SHALL BE MOUNTED TO THE MAST ARM AT THE CENTER OF THE YELLOW BALL HEAD.

NOTE:
ALL HINGES SHALL BE ON OUTSIDE OF 5 SECTION CLUSTER

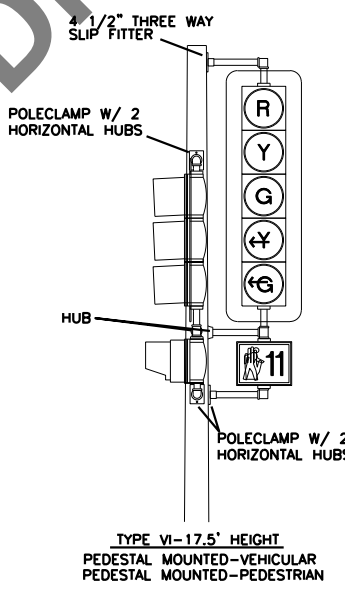
SIGNAL MAST ARM HEAD MOUNTING



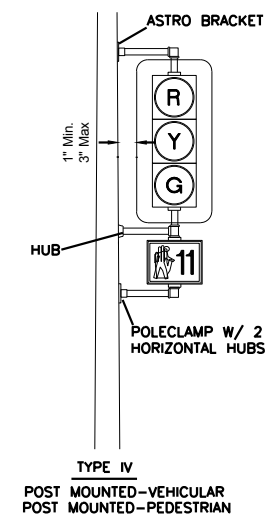
MAST ARM RIGID MOUNTED SIGNAL HEADS



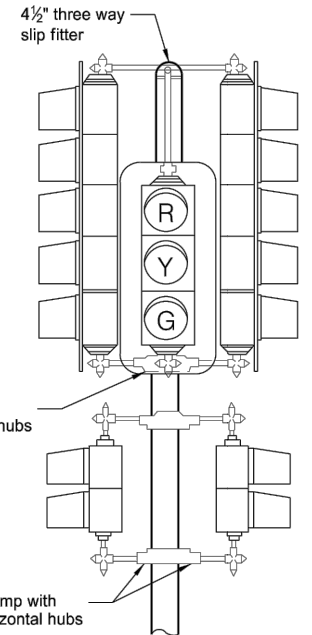
TYPE V-10' HEIGHT PEDESTAL MOUNTED-PEDESTRIAN



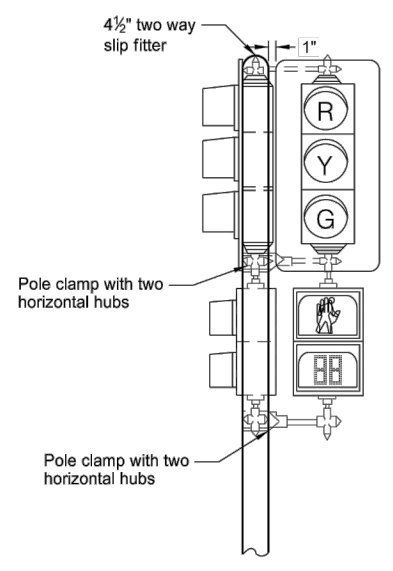
TYPE VI-17.5' HEIGHT PEDESTAL MOUNTED-VEHICULAR PEDESTAL MOUNTED-PEDESTRIAN



TYPE IV POST MOUNTED-VEHICULAR POST MOUNTED-PEDESTRIAN



TYPE VII POST MOUNTED-VEHICULAR POST MOUNTED-PEDESTRIAN (A)



TYPE V POST MOUNTED-VEHICULAR POST MOUNTED-PEDESTRIAN (A)

NOTES:
CLEARANCE FROM GROUND LINE OR SIDEWALK TO THE BOTTOM OF POST OR PEDESTAL MOUNTED VEHICULAR SIGNAL HEADS SHALL BE 10 FT. MINIMUM FROM PEDESTRIAN SIGNAL SHALL BE 8 FT. MINIMUM.

SIGNAL HEADS
SEE TRAFFIC LAYOUT FOR CORRECT MOUNTING POSITION, NUMBERS, SIZE, AND ARRANGEMENT OF LENSES.

POLE CLAMPS
A POLE PLATE WITH SUITABLE BANDING MATERIAL AS APPROVED BY THE ENGINEER SHALL BE USED.

PAINT
SIGNAL HOUSING SHALL BE PAINTED YELLOW OR BLACK, SEE PLANS. BACK PLATES SHALL BE PAINTED FLAT BLACK. POLE CLAMPS AND SIGNAL HEAD MOUNTING HARDWARE SHALL BE PAINTED THE SAME COLOR AS THE SIGNAL STANDARD SHAFT.

TRAFFIC SIGNAL HEAD MOUNTING

City Plate No.:	TRA-4
Last Revision:	4/18/2019
File:	TRA-4.dwg

**STANDARD DETAILS
SIGNAL STANDARDS
& HEAD MOUNTING**

