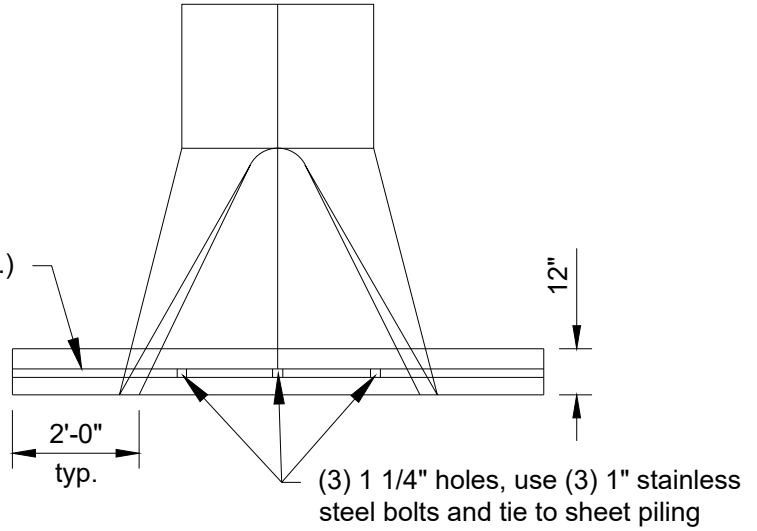


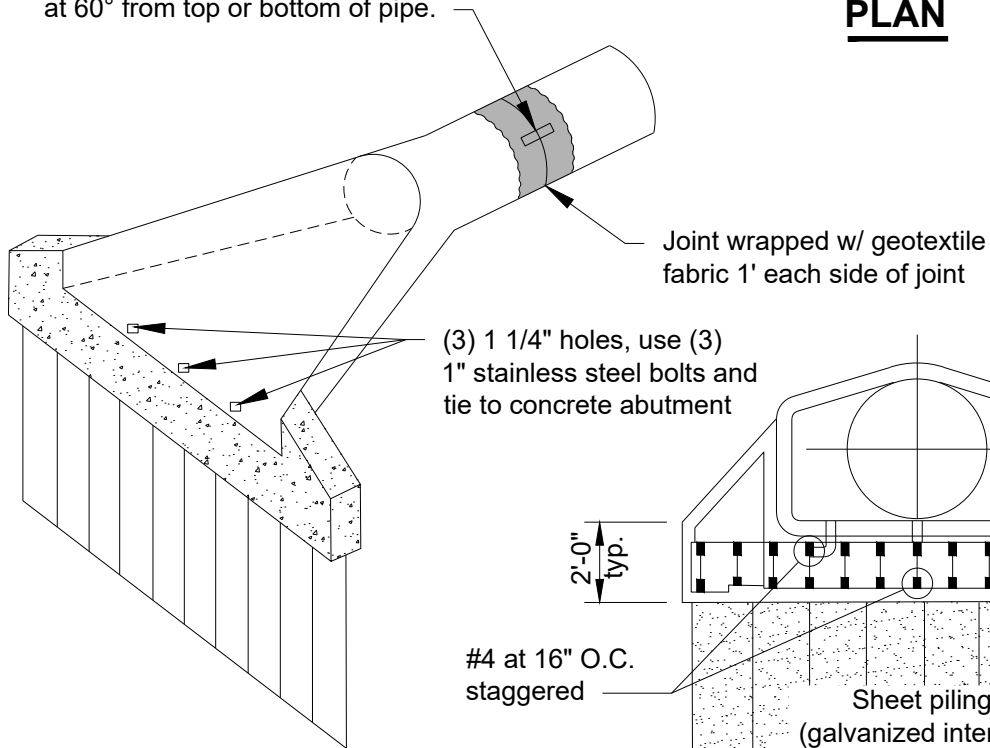
MA:STANDARD SPECS & DETAIL S(2019)Detail Plates(STO-12) F.E.S. CUTOFF WALL.dwg

3000 PSI
concrete (typ.)



PLAN

Tie last 3 pipe joints. Use 2 tie
bolt fasteners per joint installed
at 60° from top or bottom of pipe.



(3) 1 1/4" holes, use (3)
1" stainless steel bolts and
tie to concrete abutment

Joint wrapped w/ geotextile
fabric 1' each side of joint

Leave trash
guard tabs
exposed

#4 each side

2'-0"
typ.

#4 at 16" O.C.
staggered

Sheet piling
(galvanized interlock
10 gauge minimum)

#4 each
face

7'
typ.

Outside width of end
section plus 4'-0"

ELEVATION

PILING FOR FLARED END SECTION

City Plate No.:
STO-12

Last Revision:
6/5/2019

File:
STO_12.dwg

STANDARD DETAILS
F.E.S. CUTOFF WALL

